

VISITOR GUIDE

WE SECURE AMERICA'S FUTURE

WELCOME

NEVADA NATIONAL

NNSS
SECURITY SITES

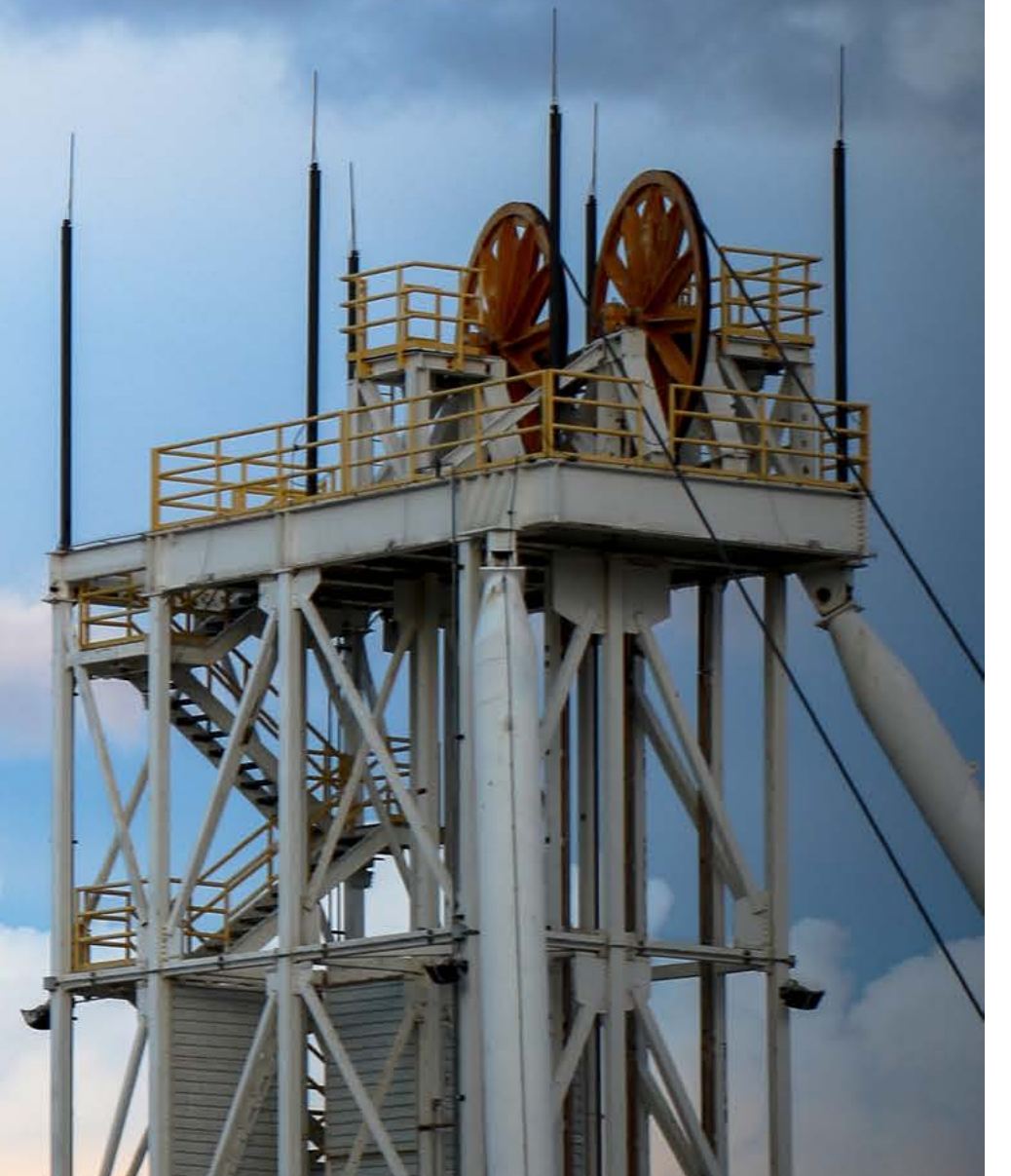
↓
SCROLL
DOWN
↓



CURRENT MISSION

The Nevada National Security Sites (NNSS) helps ensure the security of the United States and its allies by: supporting the stewardship of the nation's nuclear deterrent; providing nuclear and radiological emergency response capabilities and training; contributing to key nonproliferation and arms control initiatives; executing national-level experiments in support of the National Laboratories; working with national security customers and other federal agencies on important national security activities; and providing long-term environmental stewardship of the NNSS's Cold War legacy.

WE SECURE AMERICA'S FUTURE





Supporting National Security

Mercury

Mercury, Nevada, a town 65 miles northwest of Las Vegas, is the gateway to the Nevada Test Site, now known as the Nevada National Security Sites (NNSS). While no one knows for sure how Mercury got its name, local lore has it that an adventurous miner in the 1850s discovered mercury-bearing ore in the nearby Calico Hills. His trusty path became known as Mercury Road, and soon enough, the surrounding area took on the name too.

Fast forward nearly a century, and the Atomic Energy Commission transformed Mercury into a bustling town - complete with all the facilities and amenities you'd find in any other small U.S. town, just minus one thing: public access.



BEEF

The Big Explosives Experimental Facility (BEEF) is a high explosives test range for detonation of high explosives up to the equivalent of 5,000 pounds of TNT. BEEF is used to conduct fragmentation and material property experiments in support of assessing the U.S. nuclear weapons stockpile.



DAF

The Device Assembly Facility (DAF) is a highly secure facility designed and built to provide safe structures for high explosive and nuclear explosive assembly operations. It also supports scientific experimentation, nuclear safety training and temporary staging of mission-critical materials.



JASPER

The Joint Actinide Shock Physics Experimental Research Facility (JASPER) is a shock-physics gas gun designed to collect a subset of the data necessary to certify the safety and efficacy of the U.S. nuclear weapons stockpile.

P Tunnel

Located more than 100 miles north of Las Vegas at the NNSS, P Tunnel provides a safe, secure, controlled, and remote underground testbed for high-hazard, high-explosive experiments for government partners. Unique geologic characteristics make P Tunnel an ideal setting for experimentation and other national security projects. P Tunnel, roughly 900 feet underground, encompasses four miles of horizontal mined space and features multiple testbeds which support the research, development, and evaluation of technical solutions that strengthen current and future nuclear nonproliferation capabilities. P Tunnel also serves as a proving ground for critical response to nuclear terrorism attribution and forensic analysis.



PULSE

The Principal Underground Laboratory for Subcritical Experimentation (PULSE), formerly known as the U1a Complex, is a key component in ensuring the reliability of the nation's nuclear arsenal. At PULSE, scientists conduct subcritical and physics experiments used in the NNSA's Stockpile Stewardship Program, to obtain technical information about the U.S. nuclear weapons stockpile to ensure its safety and reliability now, and in the future. PULSE is the only place in the nation where subcritical experiments using plutonium in weapons-relevant quantities can be conducted.



RNCTEC

The Radiological/ Nuclear Countermeasures Test and Evaluation Complex (RNCTEC) is a multiuse test and evaluation platform that serves U.S. Homeland Security. Its mission: To provide the nation with the necessary facilities and capabilities to validate the performance of systems that aid the U.S. in responding to terrorist radiological or nuclear threats, whether under development or already deployed. The NNSS scientists who work at RNCTEC are the nation's go-to experts in detecting and locating dirty bombs, loose nukes and other radiological sources.



NPTEC

The Nonproliferation Test and Evaluation Complex (NPTEC) is all about testing hazardous materials in real-world conditions. Located at Frenchman Flat within the Site, NPTEC is the world's largest open-air testing facility for hazardous materials and biological simulants. Its unique landscape, predictable winds, and secure setting make it an ideal spot for both small- and large-scale testing and training. NPTEC also allows private and public sector partners to evaluate their technologies and conduct safety tests, offering a realistic environment to verify their tools. The research and demonstration facility is available on a user-fee basis to private and public sector partners.



CTOS

The Center for Radiological Nuclear Training (CTOS) is a member of the National Domestic Preparedness Consortium and supports homeland security by pairing extensive radiological expertise with the unique assets of the NNSS to deliver realistic, high-quality training and course materials at no cost to eligible participants. Course participants learn how to respond to the potential use of radiation exposure devices, improvised nuclear devices, and radiation dispersal devices, including dirty bombs.

Visiting the NNSS

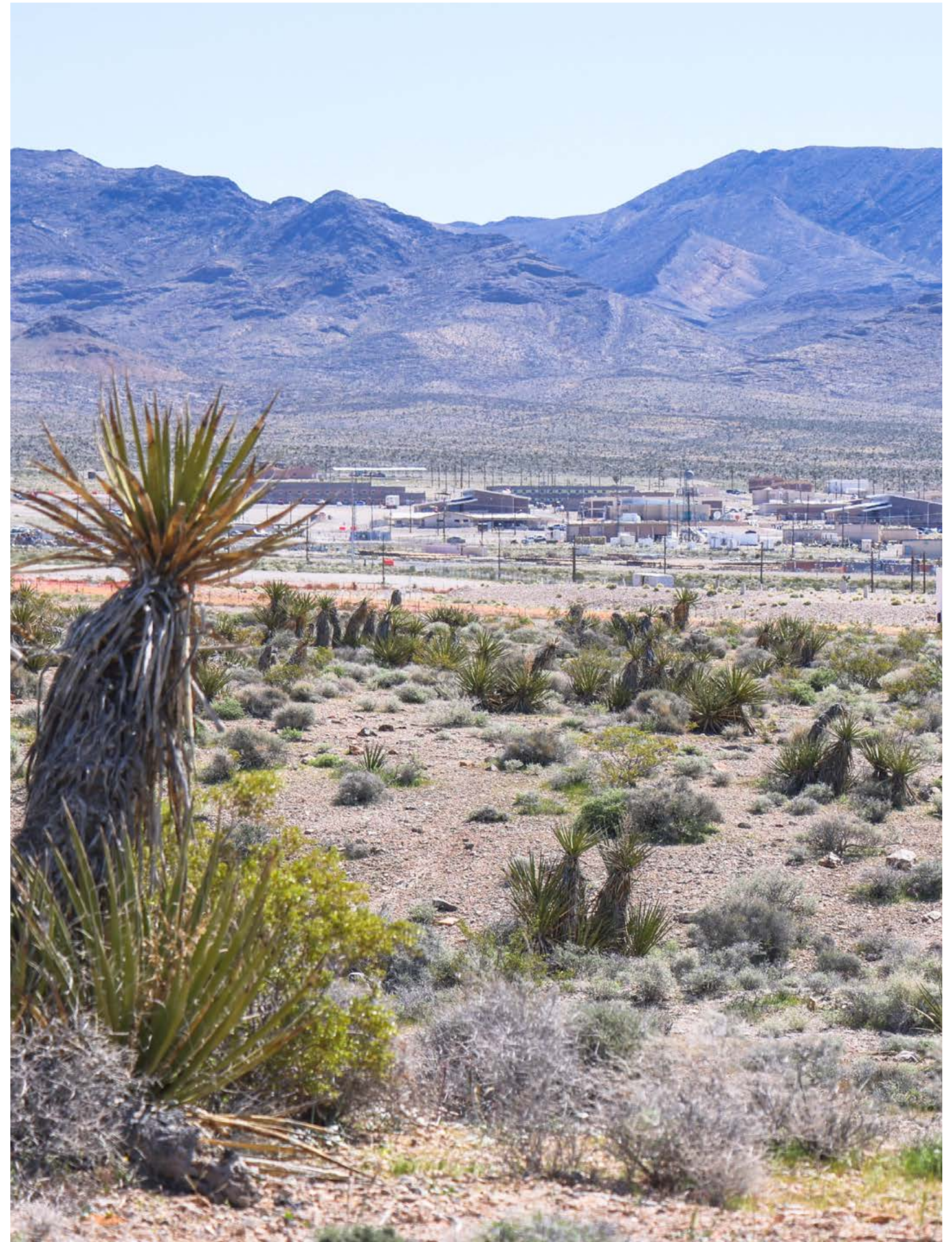
The Nevada National Security Sites (NNSS) is managed and operated by Mission Support and Test Services LLC (MSTS) for the U.S. Department of Energy's (DOE) National Nuclear Security Administration (NNSA). The 1,355-square-mile Site and its related facilities throughout the United States help ensure the security of the United States and its allies by supporting the stewardship of the nation's nuclear stockpile and executing national-level experiments in support of the national laboratories.

Tucked away in a secure area of Southern Nevada, the Site is a cutting-edge national laboratory offering outdoor, indoor, and underground facilities. It's a go-to location for experiments supporting the NNSA's nuclear weapons stewardship, national defense, and security research.

The Nevada National Security Sites' Office of Protocol and Visits (OPV) plays a vital role when hosting visitors and coordinating tours, meetings, and events for guests spanning various levels of state and federal government, alongside industrial, academic, and military entities to the NNSS and satellite locations.

Our office works in collaboration with programs and directorates across the NNSS and in partnership with National Nuclear Security Administration's Nevada Field Office (NFO), the Department of Energy complex, and national laboratories to coordinate and execute high-level events with precision and professionalism. We serve as liaison between the Office of Protocol, NFO, and visiting parties who may attend meetings, tours, strategic visits, and ceremonial events at NNSS.

Engaging the Office of Protocol and Visits in the initial stages of visit discussions will lead to the mutually beneficial collaboration to ensure the visitors are warmly welcomed, the curation of a bespoke agenda, and seamless planning.



Office of Protocol and Visits Details

The Office of Protocol and Visits works in collaboration with programs, directorates, and senior leaders across the NNSC and in partnership with National Nuclear Security Administration's Nevada Field Office, the Department of Energy complex, and national laboratories to coordinate and execute high-level events, strategic visits, meetings, and ceremonial events.

Your assigned Protocol Officer will advise you what is required for your visit including, but not limited to, badging and security, passing clearances, training, attire, and prohibited items.

Badging and Security

Entry to the NNSC is strictly regulated. An approved DOE HSPD-12 or temporary badge is required for admittance. Visitors must provide personal information for security processing prior to arrival. Badges can be picked up at the NLV Badge Office or the Mercury Badge Office. Be prepared to present one of the following forms of identification (ID) at the Badge Office and any security checkpoint (including HSPD-12 federal credential holders):

U.S. citizens:	Non-U.S. citizens:
<ul style="list-style-type: none"> Valid U.S. driver's license or other government-issued photo ID card Valid U.S. passport Official U.S. military active-duty ID card Naturalization certificate with photograph U.S. citizens born outside of the U.S. will need to provide U.S. passport and/or naturalization paperwork in addition to ID 	<ul style="list-style-type: none"> Permanent Resident Card Valid passport PLUS Visa documentation and all accompanying original documentation

All NNSA facilities are directed to follow the Department of Homeland Security's REAL ID Act for allowable identification. A secondary form of ID may be required. Learn more at: dhs.gov/real-id.

Badges must be always protected from loss or theft and should be worn between your neck and waist with the photo side visible while on-site. Return your badge at the security checkpoint or badge office upon departure.

Clearances

Your protocol representative will inform you of the security clearances required for your visit and can coordinate assistance between your security office and Access Control.

Prohibited items

- Dangerous weapons (exception: law enforcement, with prior approval) or explosives
- Mace/pepper spray
- Instruments or material likely to produce substantial injury to people or damage to people or property
- Alcoholic beverages
- Non-prescription controlled substances
- Any other items prohibited by law

Electronics

Privately-owned mobile devices (e.g., laptop, cell phone, tablet, wearables):

- Cellular telephones with photographic capability are allowed in uncleared portions of buildings, but visitors are prohibited from using the photographic, audio, and video recording capabilities.
- Government-owned equipment may be taken into these areas but must be turned off unless permission from the Safeguards and Security office has been granted. For more detailed information, please download and review the Prohibited and Controlled Articles Policy.
- Privately owned radio frequency transmitting equipment are prohibited.
- Privately owned photographic/optical equipment are prohibited unless permission from Safeguards and Security office has been granted.

Dress Attire

When visiting the Site and facilities, all participants should wear full length pants, short or long-sleeved shirts, socks, and closed toe sturdy shoes. No capri pants, dresses, high heels, or tank tops are permitted. You will be notified of any additional guidance related to the tours planned for your visit.

Hospitality

Meals offered at NNSC functions must plan for payment prior to arrival. Visitors will be notified in advance if meals have been coordinated during their visit. Please advise your Protocol Office of any allergies or dietary restrictions.

MEET THE TEAM

For further information, please visit nns.gov or contact the Protocol Office:



Gina Putnam
702-295-4117
Chief of Protocol

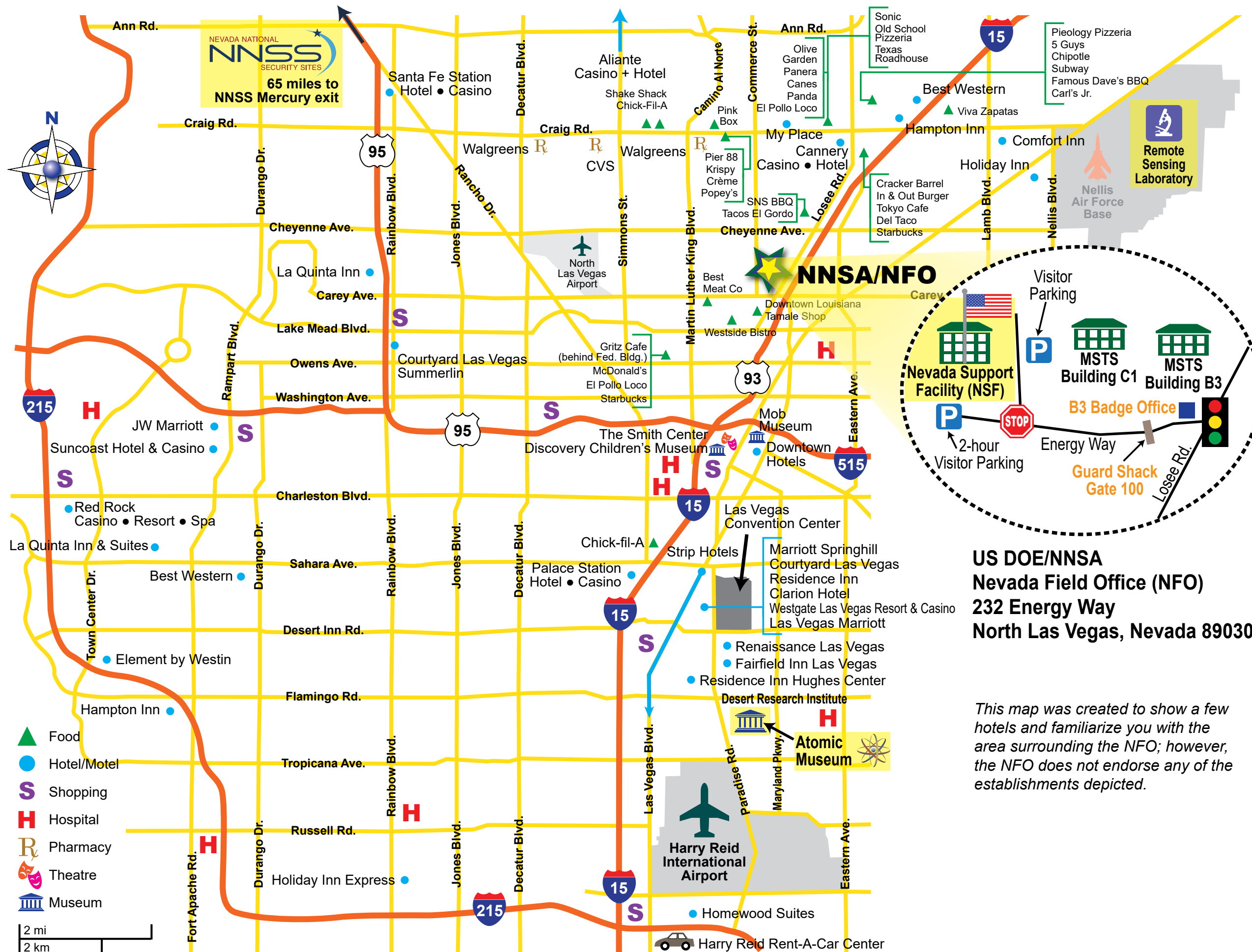


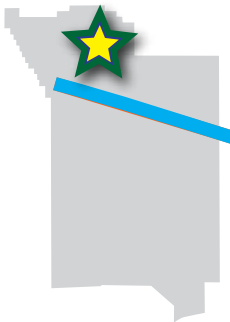
Renee Blasi
702-295-5638
Protocol Officer



Jason Shannon
702-295-6815
Protocol Officer

NNSCProtocolOffice@nv.doe.gov



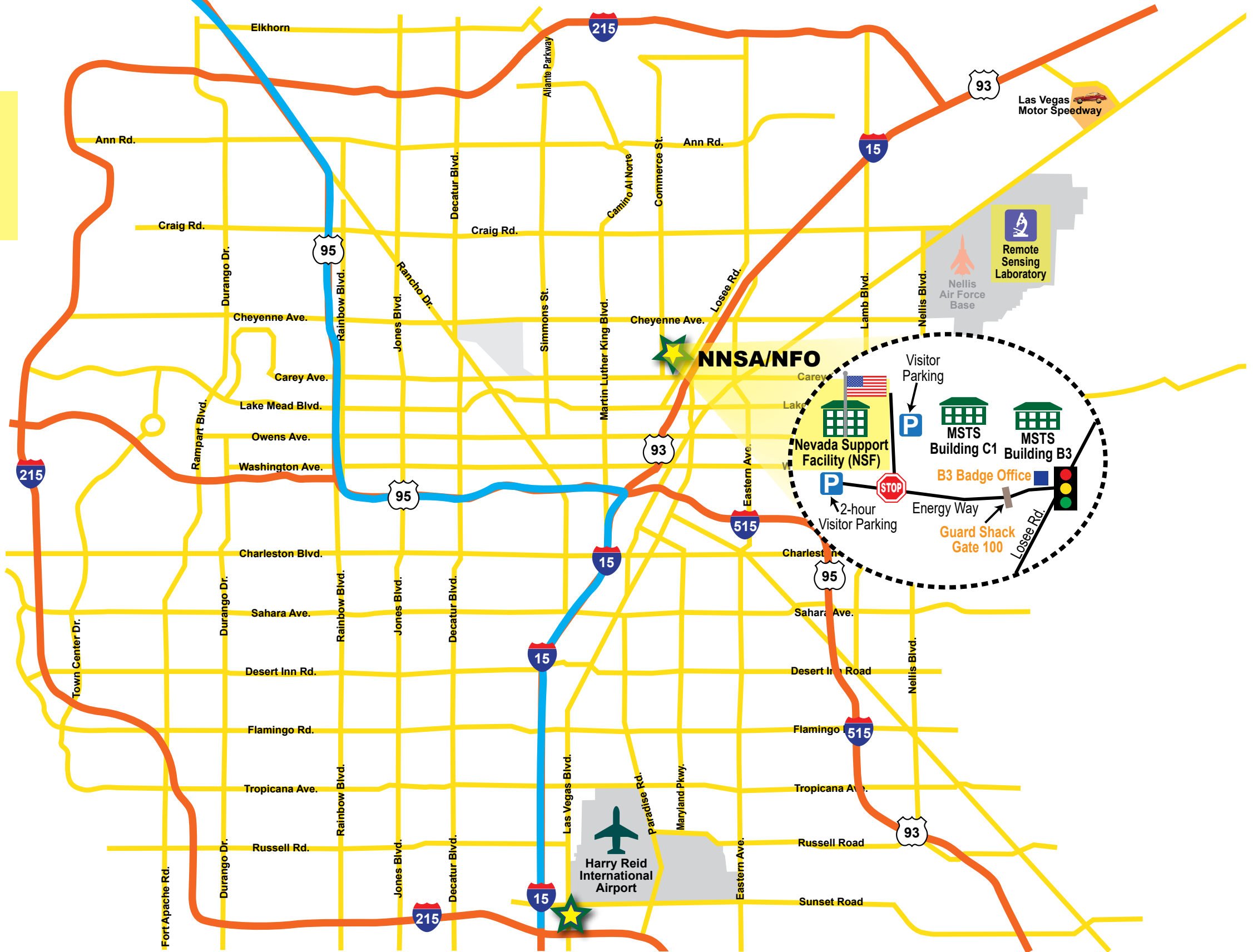


NEVADA NATIONAL
NNSS
 SECURITY SITES

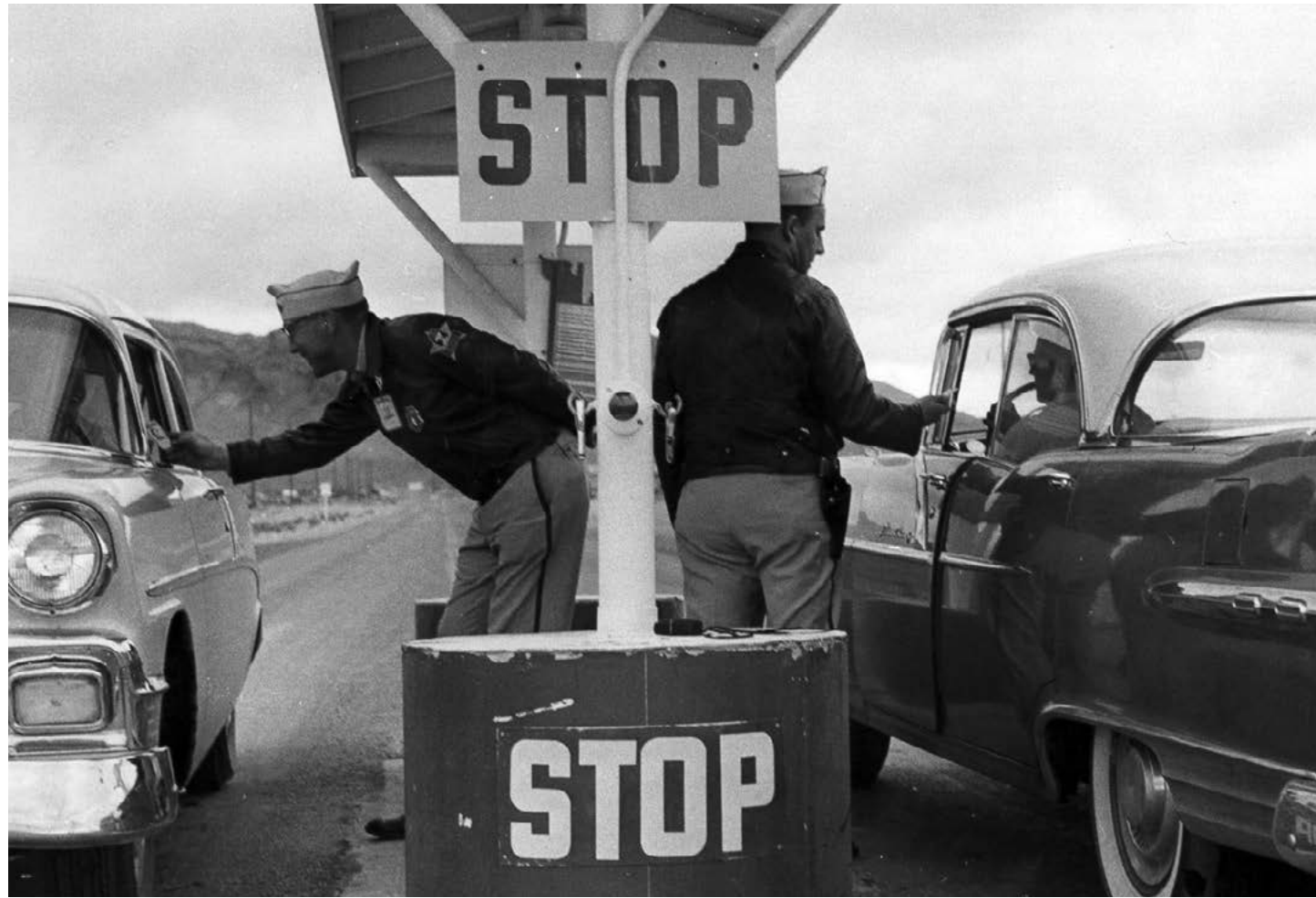
**65 miles to
 NNSS Mercury exit**

DIRECTIONS

The North Las Vegas (NLV) Facility is located at 232 Energy Way, North Las Vegas, NV 89030. The Site is located 65 miles northwest of Las Vegas, off the U.S. 95 Mercury exit. Directions to all other NNSS facilities will be provided by your host. Please visit our website, NNSS.gov, for more details.



06240028



Historical Points of Interest

Sedan Crater

Sedan Crater was formed on July 6, 1962, when the U.S. Atomic Energy Commission, predecessor of the U.S. Department of Energy, conducted an excavation experiment using a 104-kiloton thermonuclear device. The test, detonated 635 feet underground, helped develop technology for earth-moving projects. The awe-inspiring explosion displaced about 12 million tons of earth, creating a crater 1,280 feet in diameter and 320 feet deep. The force of the detonation released seismic energy equivalent to an earthquake with a magnitude of 4.75 on the Richter Scale.



Icecap

At 152 feet tall, this tower remains a well-known, highly visible landmark at the Site. It is the modular tower built for Icecap, a joint United Kingdom and Los Alamos National Laboratory underground nuclear test scheduled for the spring of 1993. What was scheduled to be the 929th test came to a halt when President Bush signed the Underground Nuclear Testing Moratorium on Oct. 3, 1992. The tower still remains in Area 7 of the Site. The Icecap tower sits on top of a shaft that was originally drilled to a depth of 1,600 feet. The tower houses a custom-made, 7-footwide instrumentation rack, which would have weighed 350,000 pounds at the beginning of descent and 500,000 pounds by the time it was at the proper depth of burial.



Gun Turret

Site building 2-328, known as the Area 2 Gun Turret, consists of an above-ground moveable naval gun turret and a circular, partially underground concrete bunker. Along with several other structures in the vicinity, the turret and nearby buildings functioned as shelters for the instruments, detectors, and power and communications devices used to record data from atmospheric nuclear tests.



Apple II House

Apple II was a 29-kiloton nuclear device placed on top of a 500-foot tower for a May 5, 1955 test in Area 1 of the Site. A typical American community – complete with one- and two-story homes, American-made automobiles, mannequins, food and more – was constructed to measure the effects of a nuclear test. Today, the houses that remain are a high point of many Site tours.

PLANNING A VISIT



Local Accommodations



JW Marriott Las Vegas Resort and Spa
702-869-7777



Suncoast Hotel and Casino
702-636-7111



Red Rock Resort
702-797-7777



Durango Casino and Resort
702-567-7777



Residence Inn Las Vegas Hughes Center
702-650-0040

Aliante Casino Hotel Spa
702-692-7777



Element by Westin Las Vegas Summerlin
702-589-2000



Renaissance Las Vegas Hotel
702-784-5700



Residence Inn Las Vegas Convention Center
702-736-9300



The Westin Las Vegas Hotel and Spa-Marriott
702-836-5900



Home 2 Suites by Hilton Las Vegas Northwest
725-977-8906





Local Las Vegas Restaurants

Ada's Food + Wine

410 S. Rampart Blvd. #120,
Las Vegas, NV 89145

Al Solito Posto

420 S. Rampart Blvd. #180,
Las Vegas, NV 89145

El Dorado Cantina-Tivoli Village

430 S. Rampart Blvd. #110,
Las Vegas, NV 89145

Hawthorn Grill

221 N. Rampart Blvd., Las Vegas,
NV 89145 (Inside JW Marriott Resort, Spa Tower)

La Strega

3555 S. Town Center Drive, #105,
Las Vegas, NV 89135

Mijo Modern Mexican Restaurant

6915 S. Durango Drive, Las Vegas,
NV 89148 (inside Durango Casino and Resort)

MRKT

7300 N. Aliante Pkwy,
North Las Vegas, NV 89084

Nittaya's Secret Kitchen

8427 W. Lake Mead Blvd.,
Las Vegas, NV 89128

William B's Steakhouse

9090 Alta Drive, Las Vegas,
NV 89145 (inside Suncoast Hotel and Casino)

Spiedini Fiamma Italian Bistro

221 N. Rampart Blvd.,
Las Vegas, NV 89145 (Inside Rampart Casino)

Summer House

6915 S. Durango Drive,
Las Vegas, NV 89148
(inside Durango Casino and Resort)

Vintner Grill

10100 W. Charleston Blvd.,
Las Vegas, NV 89135

Local Attractions



Red Rock Canyon National Conservation Area

An absolutely stunning 12 km loop takes you thru this glorious National Park, located just outside downtown Vegas. There is plenty to see via the multitude of hiking trails or via the scenic stops on the driving route.



Fountains of Bellagio

These 200-foot-tall fountains at the Bellagio Hotel are choreographed to music for performances.



The Mob Museum

The Mob Museum is a 501(c)3 nonprofit organization with a mission to advance the public understanding of organized crime's history and impact on American society. The Mob Museum offers a bold and authentic view of organized crime from vintage Las Vegas to the back alleys of American cities and—increasingly—across the borders and networks of the entire world.



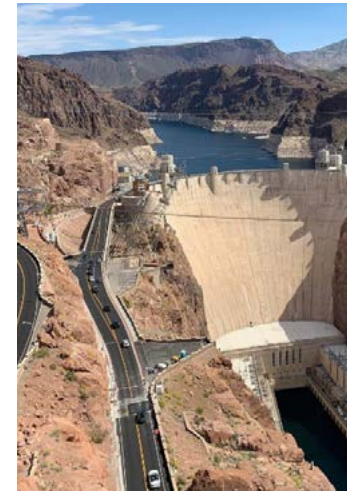
Bellagio Conservatory & Botanical Garden

The Bellagio Conservatory & Botanical Garden is a stunning indoor garden located in the Bellagio Hotel, featuring seasonal floral displays and intricate designs crafted from thousands of plants and flowers.



Eiffel Tower Viewing Deck Paris Hotel

The Eiffel Tower experience is, of course, at the Paris Resort/Hotel mid-Strip. It is a half-size reproduction of the actual Eiffel Tower.



Hoover Dam

The Hoover Dam, located on the border of Nevada and Arizona, is an engineering marvel built during the Great Depression, harnessing the power of the Colorado River to provide hydroelectric power and water to southwestern United States.



High Roller at The Linq Promenade

Located at The Linq, the High Roller measures 520 feet in diameter and eclipses both the London Eye and Singapore Flyer. Facing north and south parallel to Las Vegas Boulevard, the wheel takes 30 minutes to complete one full revolution and features 28 glass-enclosed cabins.



The Strip

The Las Vegas Strip is a vibrant, 4.2 mile stretch of road renowned for its dazzling casinos, luxury resorts, and entertainment venues, making it a global hub for nightlife and entertainment.



Stratosphere Tower

The Tower is a unique, iconic fixture in the Vegas skyline with a magnificent 360-degree view of the shimmering Las Vegas Strip and Valley. The tower is more than 1100 feet tall and has both an inside as well as an upper level outside observation deck.



Welcome to Fabulous Las Vegas Sign

This iconic neon landmark is at the southern end of the Las Vegas strip and is celebrated for its retro design.



Fremont Street Experience

A five-block pedestrian covered mall with kiosks, carts and a nightly light-and-sound show.



Pinball Hall of Fame

A fantastic place to visit for a couple of hours, including hundreds of pinball machines and old arcade games like, space invaders, Pac-Man, Donkey Kong, Frogger and many more.



Forum Shops at Caesars Palace

This Roman-themed shopping area features more than 160 upscale shops, including Fendi, Gucci, Dior, Versace, Chanel, and Cartier, plus art galleries and renowned restaurants like Spago and The Palm.



Madame Tussauds – Las Vegas

Millions and millions of people have flocked through the doors of Madame Tussauds since they first opened over 200 years ago and it remains just as popular as it ever was. There are many reasons for this enduring success, but at the heart of it all is good, old-fashioned curiosity.



Mount Charleston

A quiet retreat from the high energy of Las Vegas, this mountain stands at 11,918 feet and offers numerous outdoor activities, such as horseback riding, camping and hiking.



Downtown Container Park

Downtown Container Park is an open-air shopping and entertainment venue featuring 38 unique retail shops, restaurants, and bars. Located in Las Vegas' flourishing Downtown neighborhood, the innovative center is built from 43 repurposed shipping containers and 41 locally manufactured Xtreme cubes. Upon arrival, guests are greeted by a 35-foot-tall praying mantis sculpture that shoots flames from its antennae.



Atomic Museum

The Atomic Museum is a national science, history and educational institution that tells the story of America's nuclear weapons testing program at the Nevada Test Site. The Museum uses lessons of the past and present to better understand the extent and effect of nuclear testing on worldwide nuclear deterrence and geo-political history.



Springs Preserve

The Springs Preserve is a 180-acre cultural institution designed to commemorate Las Vegas' dynamic history and to provide a vision for a sustainable future. The Preserve features museums, galleries, outdoor concerts and events, colorful botanical gardens and an interpretive trail system that meanders through a scenic wetland habitat.



The Neon Museum

Founded in 1996, the Neon Museum is a non-profit 501 (c) 3 organization dedicated to collecting, preserving, studying and exhibiting iconic Las Vegas signs for educational, historic, arts and cultural enrichment.



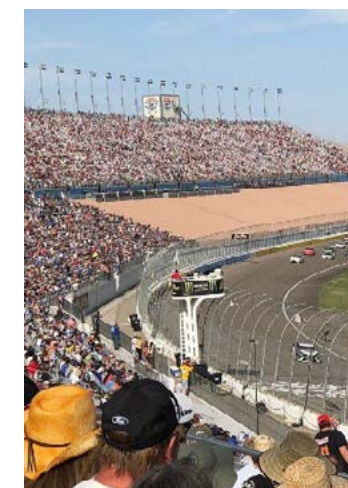
T-Mobile Arena

Las Vegas' hottest new sports and entertainment venue, located just west of the famed Las Vegas Strip. The 20,000-seat T-Mobile Arena is the destination in Las Vegas for live events – from amazing music acts to thrilling sporting events.



Shark Reef Aquarium Mandalay Bay

See more than 2,000 animals, including sharks, giant rays, endangered green sea turtles, piranha and a Komodo dragon. This unique exhibit gives you the chance to dive with a higher concentration of exotic sharks than you'd ever find in the wild.



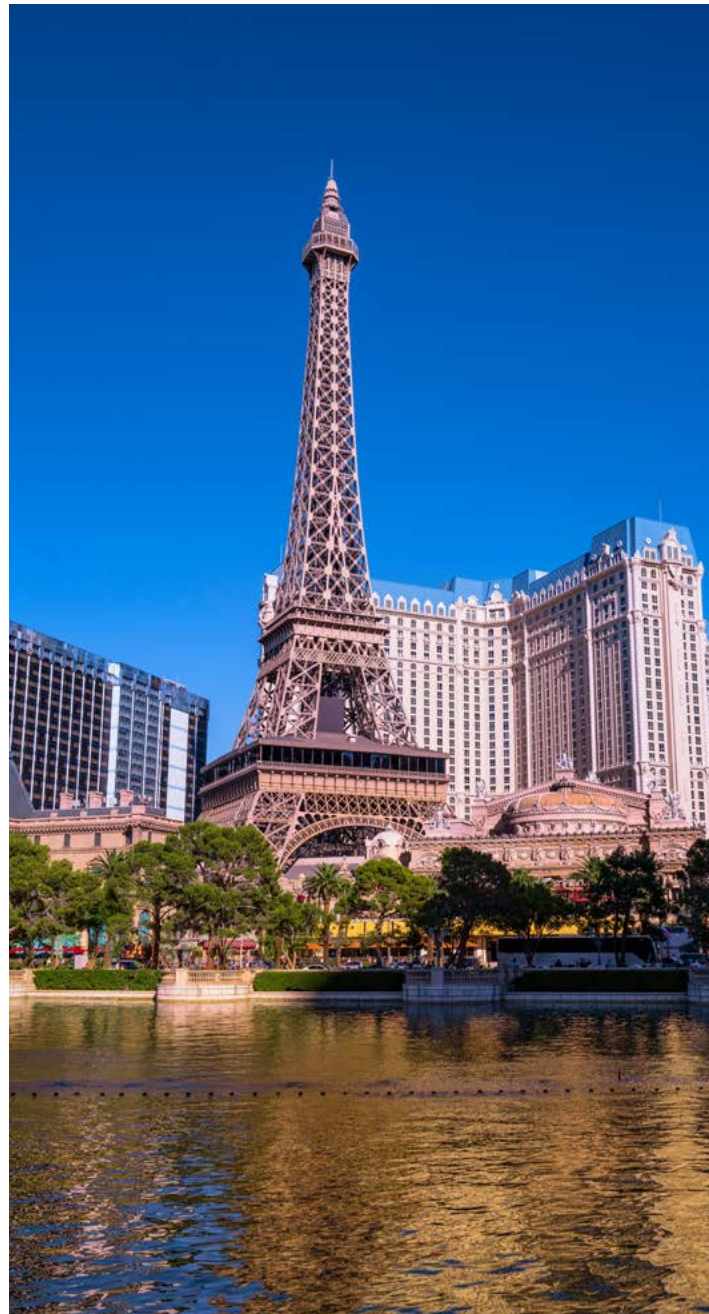
Las Vegas Motor Speedway

Home to several NASCAR events, this race car track also offers a driving school.



DISCOVERY Children's Museum

This is Las Vegas' only non-profit children's museum. The mission of DISCOVERY Children's Museum is to provide a vibrant and engaging experience, through exhibits and programs, where children from economically and culturally diverse backgrounds actively participate in playful learning experiences that ignite a love of lifelong learning.



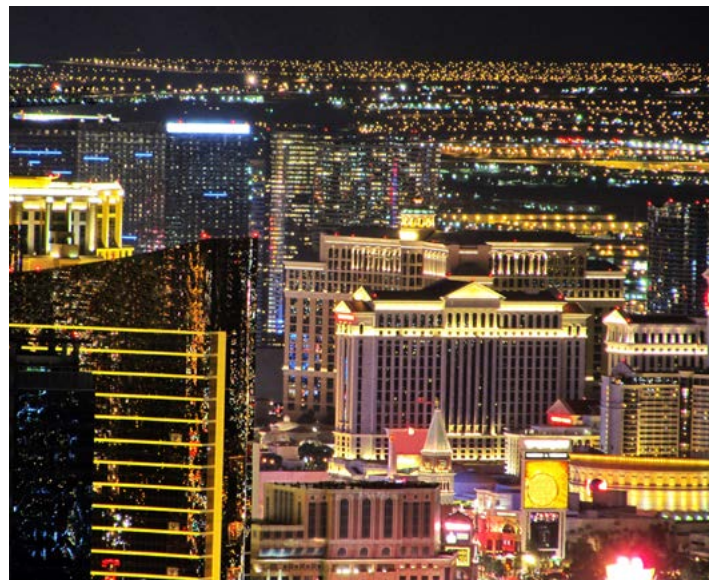
Allegiant Stadium

Allegiant Stadium is a domed 65,000 seat stadium and home of the Las Vegas Raiders of the National Football League and the University of Nevada, Las Vegas Rebels college football team.



Sphere

The Sphere is a music and entertainment arena in the east of the Las Vegas Strip. The 18,600-seat auditorium is being marketed for its immersive video and audio capabilities, which include a 16K resolution wraparound interior LED screen, speakers with beamforming and wave field synthesis technologies, and 4D physical effects.



We look forward to welcoming you to NNSS!

