

Astragalus beatleyae – Beatley milkvetch

Family: Fabaceae (legume, pea, bean)

Bloom Period: April-mid July

Perennial: Small, short-lived, circular mats 2-8 inches diameter

Leaves: 5-9 leaflets, mid-vein of each leaflet is hairless

Flowers: Blue-violet, upper petal (banner) curved back

Fruit/seed: Bladdery-inflated incurved pods with spreading hairs, pale green, reddish speckled

Uniqueness: Only grows in Nye County, Nevada (endemic)

Location it was first identified (type locality): Nye County, NV, NNSS, junction of Pahute Mesa Road & 20-02 Road (Reveal & Beatley 1968)

Associated Vegetation: Pinyon pine, juniper, sagebrush



Dr. Janice C. Beatley (1919-1987)

Worked to protect the species and its habitat from disturbances associated with nuclear underground testing in the 1980s. She designated critical habitat on Pahute Mesa in 1986. She also set up long-term monitoring plots which are still used today.



Astragalus beatleyae – Beatley milkvetch

Family: Fabaceae (legume, pea, bean)

Habitat: Outcrops of nearly flat bedrock with shallow, gravelly, weathered pockets of rock and soil; desert pavement; volcanic soil with large expanses of exposed flat volcanic rock masses

Distribution: NV (Nye County)

Elevation: 5,250-6,890 feet



Threats on the NNSS: Most populations have become remote and inaccessible by vehicles over the years; habitat disturbance is a minor threat limited to activities associated with infrastructure maintenance

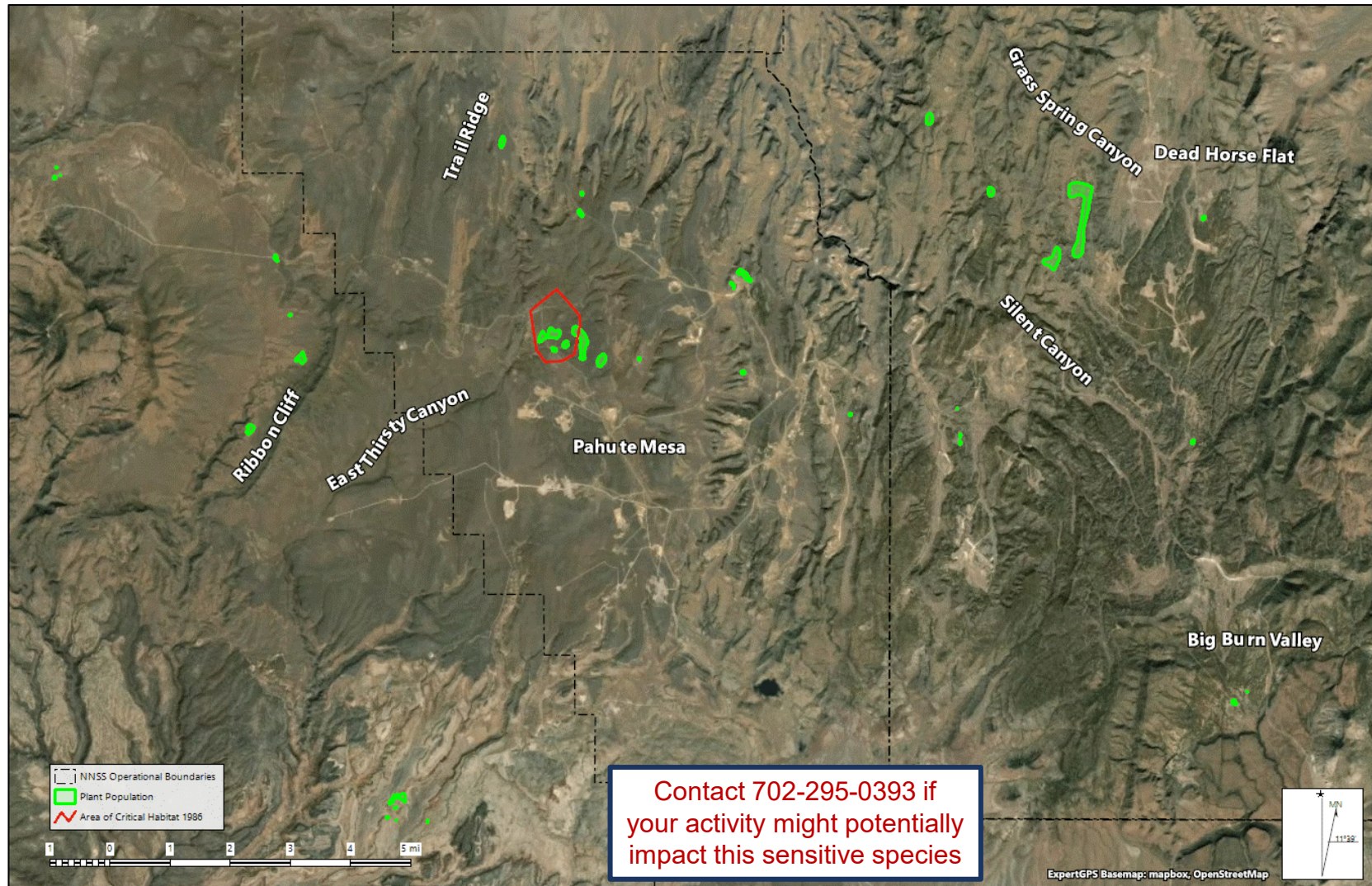
Protection Status (NV): No federal or state protections. Listed on the Nevada Division of Natural Heritage At-Risk Plant and Animal Tracking List and the Nevada Native Plant Society Watch List (<https://heritage.nv.gov/documents/ndnh-current-tracking-list>)

Astragalus beatleyae – Beatley milkvetch

Family: Fabaceae (legume, pea, bean)

Distribution on the NNSS: Pahute Mesa (East Thirsty Canyon, Trail Ridge), Silent Canyon, Dead Horse Flat, Big Burn Valley, Grass Spring Canyon; ~290 acres of habitat

Current Monitoring Goal: Routine sampling of long-term monitoring plots; survey subset of populations once every 5 years



Contact 702-295-0393 if your activity might potentially impact this sensitive species