

# *Chylismia (Camissonia) megalantha* – Cane Spring suncup

Family: Onagraceae (evening primrose)

**Bloom Period:** September-October, with some small plants as early as June

**Annual:** Robust, 0.5-6.5 feet tall, numerous branches, sticky hairs

**Leaves:** More numerous and larger at the base, 3 inches long, 2.75 inches wide, prominently lined with yellowish oil cells

**Flowers:** Pale to dark lavender, large, showy, basal floral cup (hypanthium) 0.2-0.3 inches long and 0.05-0.1 inches across at summit

**Fruit/seed:** Capsule 0.3-0.6 inches long, once opened appears as a pinwheel, seeds 0.04-0.05 inches long ovate with brown speckles

**Uniqueness:** Blooms in the fall; grows well on man-made disturbances and alongside invasive plants like tumble weed; differs from *Chylismia heterochroma* in size and flower at peak maturity

**Location it was first identified (type locality):** Cane Spring, Nye County, NNSS, NV (1938)

**Associated Vegetation:** Saltbush, blackbrush, creosote, white bursage, *Ephedra*, rabbit brush, wolfberry

Cane Spring suncup blooms in the fall season when other annuals are rare, making it prone to herbivory. Its taxonomy has been questioned due to its similarity with *Chylismia heterochroma*, which is a smaller version and overlaps in range.



# *Chylismia (Camissonia) megalantha* – Cane Spring suncup

Family: Onagraceae (evening primrose)



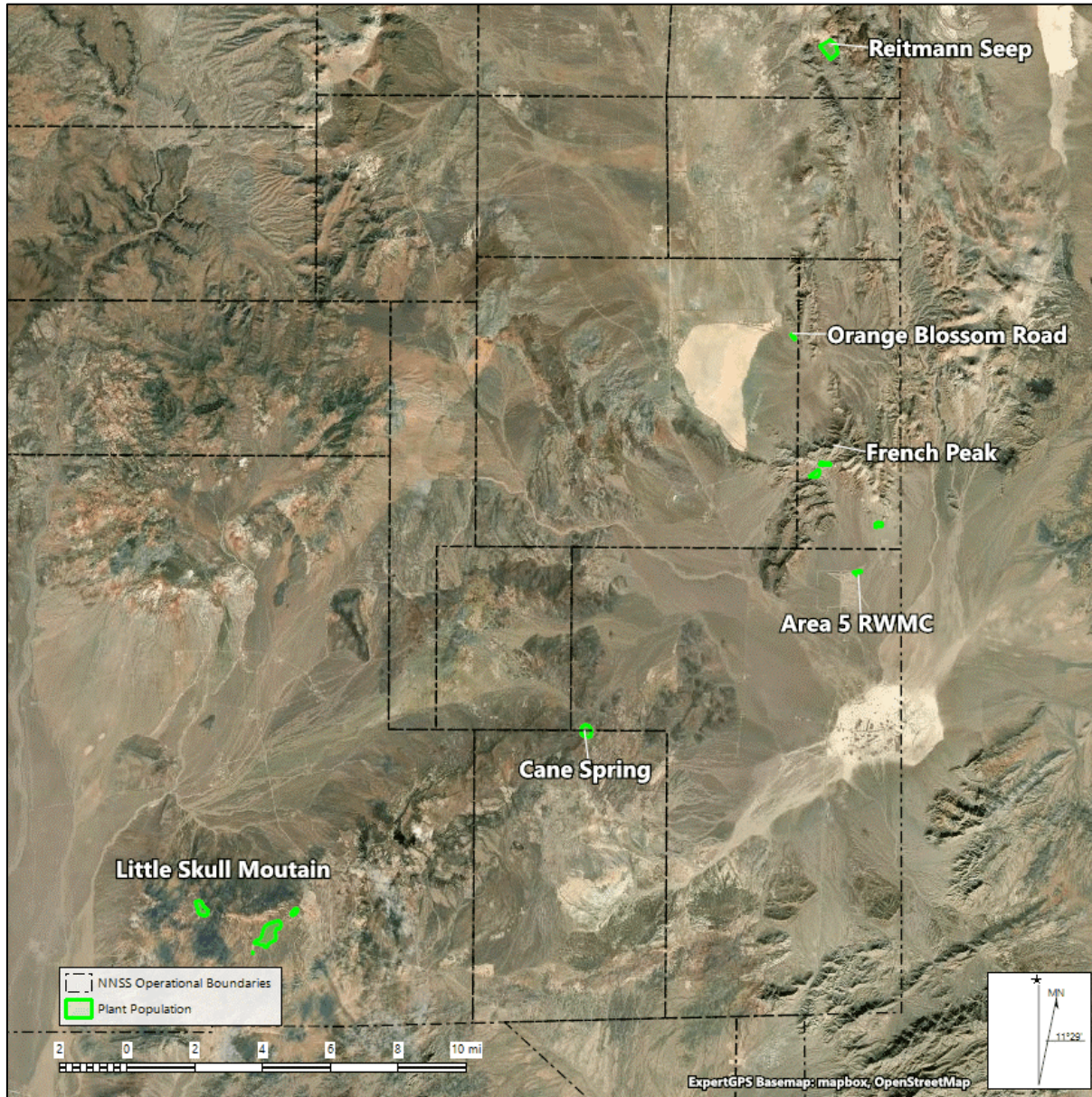
**Habitat:** Soils derived from light-colored volcanic rocks and bare volcanic alkali soils near its type locality (Cane Spring), common on roadways and manmade berms, steep slopes and washes, in open spaces between shrubs

**Distribution:** NV (Nye and Lincoln Counties)

**Elevation:** 3,380-6,500 feet

# *Chylismia (Camissonia) megalantha* – Cane Spring suncup

Family: Onagraceae (evening primrose)



**Distribution on the NNSS:** Halfpint Range (Reitmann Seep), French Peak, Cane Spring, Yucca Flat (Orange Blossom Road), Little Skull Mountain, Frenchman Flat (Area 5 RWMC); ~530 acres of habitat

**Threats on the NNSS:** Trampling from NNSS activities and herbivory at Cane Spring; roadside clearing; new disturbances constructed near known populations have created new habitat for the plant because it does well in disturbed areas

**Protection Status (NV):** No federal or state protections. Listed on the Nevada Division of Natural Heritage At-Risk Plant and Animal Tracking List and the Nevada Native Plant Society Watch List (<https://heritage.nv.gov/documents/ndnh-current-tracking-list>)

**Current Monitoring Goal:** Mapping distribution of *Chylismia megalantha* and *Chylismia heterochroma* to support taxonomy; survey subset of populations once every 5 years

Contact 702-295-0393 if your activity might potentially impact this sensitive species