

Eriogonum heermannii var. *clokeyi* – Clokey buckwheat

Family: Polygonaceae (buckwheat)



Bloom Period: June-September

Perennial: Shrub, spreading to upright, sparsely branched, branches slender whip-like

Leaves: Simple (no divisions), spatulate, mostly hairless

Flowers: Cream with red ribs and red base, small 0.1 inches

Uniqueness: All varieties are food plants for Ellis' dotted-blue butterfly (*Euphilotes ellisi*)

Location it was first identified (type locality): Uncertain; first documented collection 5 miles west of Goodsprings, Clark County, NV, on road to Kingston (LaRivers 1937)

Associated Vegetation: Blackbrush, *Ephedra*, saltbush

There are 10 varieties (subspecies) of *Eriogonum heermannii*. Five occur in Nevada. Four grow on the NNSS and one just off the NNSS on Yucca Mountain. Each variety can be identified by its branching patterns, flowers, and stem characteristics.

Eriogonum heermannii var. *clokeyi* – Clokey buckwheat

Family: Polygonaceae (buckwheat)



Habitat: Restricted to limestone foothills and slopes

Distribution: NV (Clark, Lincoln, and Nye Counties)

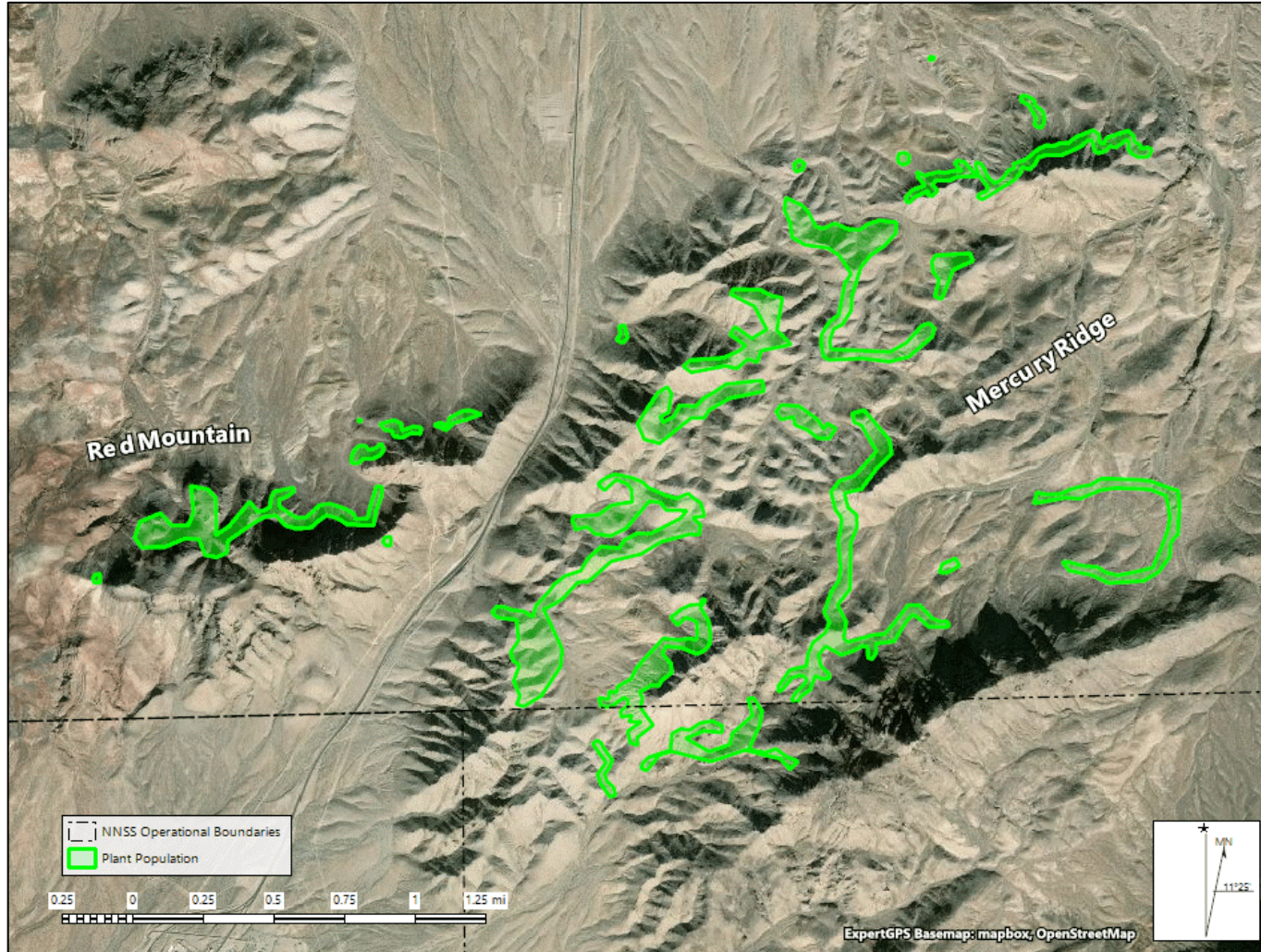
Elevation: 3,900-6,000 feet

Threats on the NNSS: Plants grow in steep, remote habitat not ideal for NNSS activities; currently no known human threats

Protection Status (NV): No federal or state protections. Listed on the Nevada Division of Natural Heritage At-Risk Plant and Animal Tracking List and the Nevada Native Plant Society Watch List (<https://heritage.nv.gov/documents/ndnh-current-tracking-list>)

Eriogonum heermannii var. *clokeyi* – Clokey buckwheat

Family: Polygonaceae (buckwheat)



Distribution on the NNSS: West Spotted Range (Mercury Ridge, Red Mountain); ~370 acres of habitat

Current Monitoring Goal: This species has a restricted distribution in a small area on Red Mountain and Mercury Ridge where there are no known human threats; survey subset of populations once every 5 years

Contact 702-295-0393 if your activity might potentially impact this sensitive species