

Astragalus oophorus var. *clokeyanus* – Clokey eggvetch

Family: Fabaceae (legume, pea, bean)

Bloom Period: April-July

Perennial: Up to 4 inches high, stems 4-8 inches long, spreading

Leaves: Terminal, green, 4-9 lateral, divided into 9-19 egg-shaped to rounded leaflets, no hairs

Flowers: Stalks of bright reddish-purple and white pea-like flowers, loose grounds of 4-10

Fruit/seed: Strongly inflated, papery, egg-shaped, mottled reddish fruiting pods with 23-34 ovules per pod

Uniqueness: This species has a wide tolerance of habitats; due to its association with many other sensitive plant species, conserving this plant's habitat in turn conserves many other sensitive plant species

Location it was first identified (type locality): Lee Canyon Pipe Line Ridge, Charleston Mountains, Clark County, NV (LaRivers & Hancock 1938)

Associated Vegetation: Pinyon pine, juniper, sagebrush, Gambel oak, *Ephedra*, ponderosa pine, white fir-limber pine

Ira W. Clokey (1878-1950)

The name *Astragalus artipes* was misapplied to the very first collection of this plant by Ira W. Clokey in 1938. The name "*clokeyanus*" was later applied in honor of his honest mistake.



Astragalus oophorus var. *clokeyanus* – Clokey eggvetch

Family: Fabaceae (legume, pea, bean)



Habitat: Found on dry to moist, often somewhat disturbed open slopes, flats, or drainage bottoms and adjacent foot-slopes on gravelly, often basic silty-loam soils derived from limestone, tuff, or other rhyolitic volcanics (sometimes on steep slopes of weathering tuff), sometimes near old burns

Distribution: NV (Clark and Nye Counties)

Elevation: 5,365-9,005 feet

Threats on the NNSS: Some plants grow on road beds, in washes that frequently wash out, and in fire prone habitat; this species shows some degree of tolerance to disturbance; currently no known human threats

Protection Status (NV): No federal or state protections. Listed on the Nevada Division of Natural Heritage At-Risk Plant and Animal Tracking List and the Nevada Native Plant Society Watch List (<https://heritage.nv.gov/documents/ndnh-current-tracking-list>)

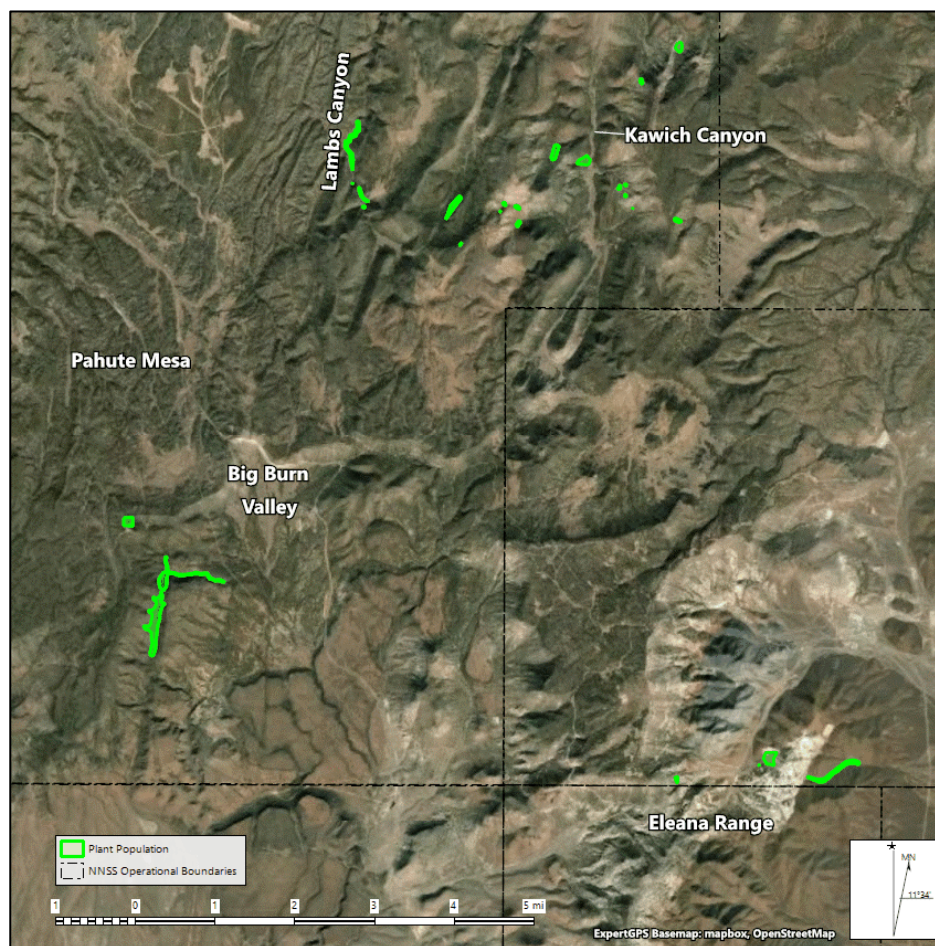
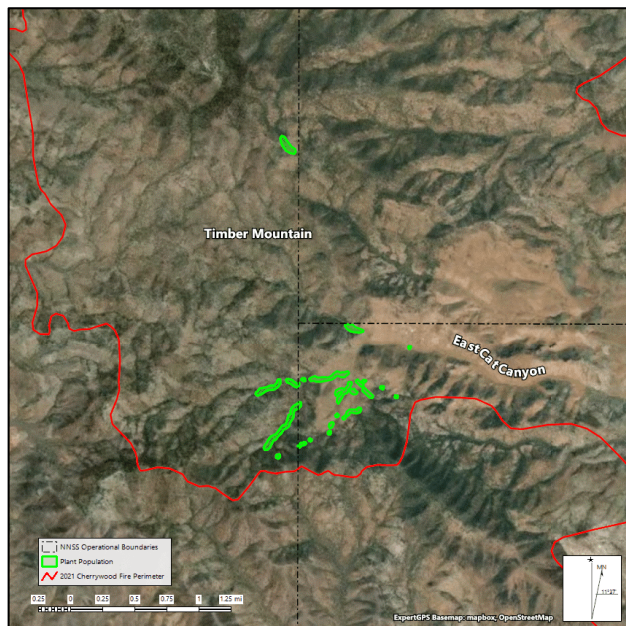


Astragalus oophorus var. *clokeyanus* – Clokey eggvetch

Family: Fabaceae (legume, pea, bean)

Distribution on the NNSS: Timber Mountain, Shoshone Mountain, Pahute Mesa, Eleana Range, Kawich Range, Lambs Canyon; ~220 acres of habitat

Current Monitoring Goal: Monitor populations in burned areas; survey subset of populations once every 5 years



Contact 702-295-0393 if your activity might potentially impact this sensitive species