

Eriogonum concinnum – Darin buckwheat

Family: Polygonaceae (buckwheat)

Bloom Period: Late May-early September

Annual: Usually one stem, arising from thin brown taproots, up to 30 inches high, upright

Leaves: Mostly basal, sparsely hairy, leaf-blades almost heart shaped, green to yellowish-green, tanning with age

Flowers: White to greenish-white, with light green midribs, tiny <0.08 inches

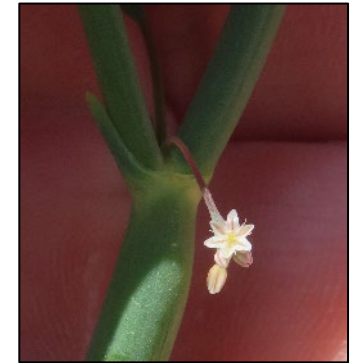
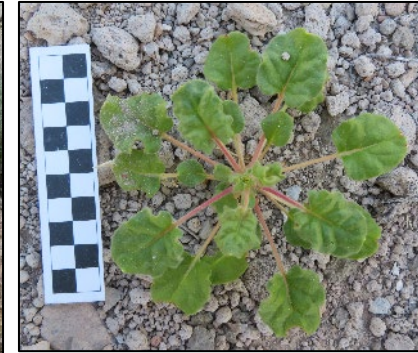
Fruit/seed: One-seeded fruit that does not open to release the seed (achene), dark greenish-brown to black, 3 angled

Uniqueness: Only grows in Nye County, Nevada (endemic); commonly misidentified

Location it was first identified (type locality):

Buckboard Mesa Road, Nye County, NNSS, NV (Reveal 1968)

Darin buckwheat is in the *Eriogonum deflexum* complex, which is a group of species that have flowers oriented upside-down.



Eriogonum concinnum – Darin buckwheat

Family: Polygonaceae (buckwheat)



Habitat: Generally restricted to sandy soils sometimes covered by talus or scree, may become weedy in nature, grows in disturbed soils, roadcuts

Distribution: NV (Nye County)

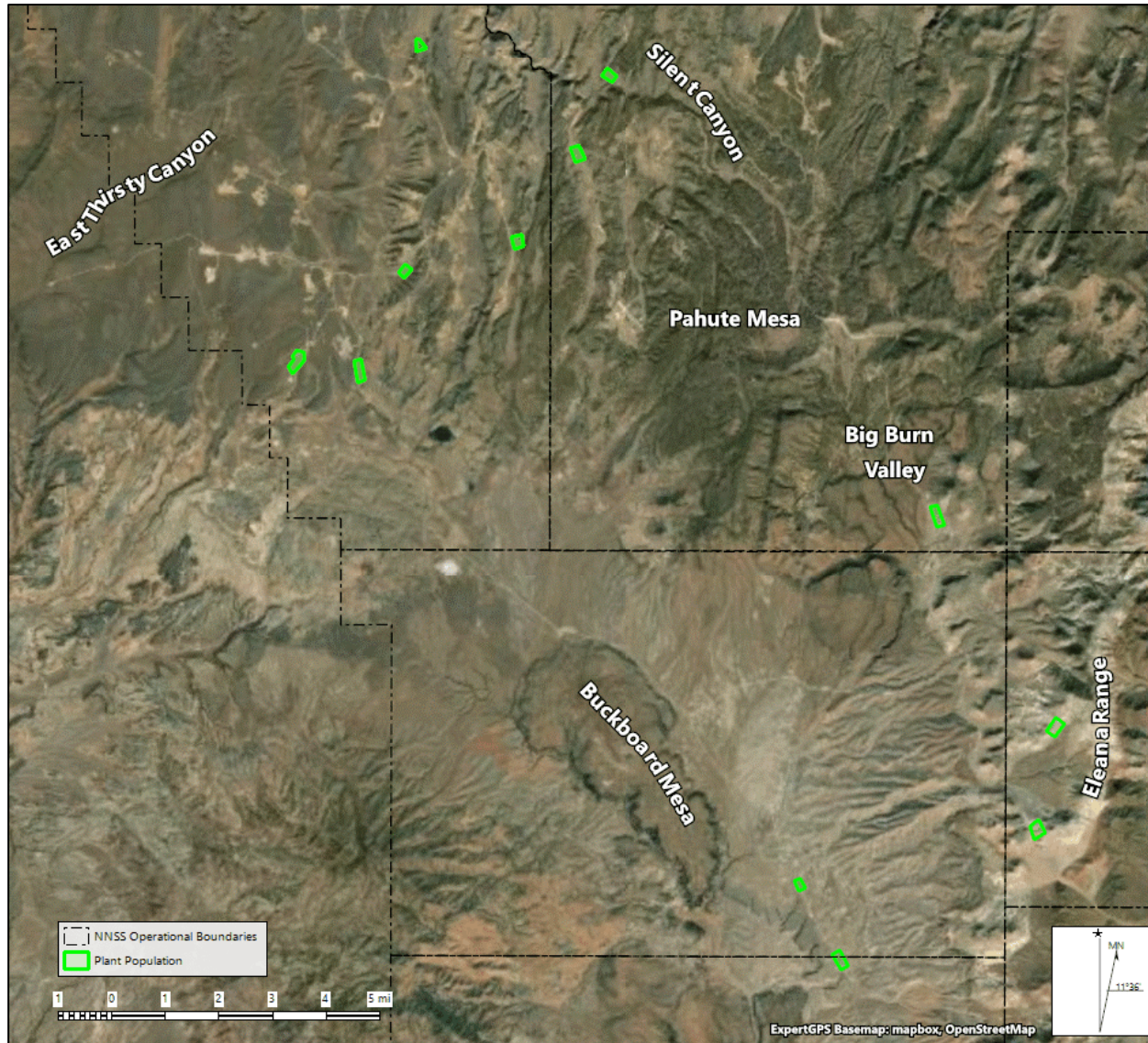
Elevation: 2,530-6,700 feet

Threats on the NNSS: Plants growing along roadcuts, drill pads, and sumps are subject to disturbance, but the species does well in disturbances

Associated Vegetation: Pinyon pine, juniper, sagebrush, blackbrush, saltbush, rabbitbrush, *Ephedra*

Eriogonum concinnum – Darin buckwheat

Family: Polygonaceae (buckwheat)



Distribution on the NNSS: Buckboard Mesa, Pahute Mesa (Silent Canyon), Thirsty Canyon, Big Burn Valley (Rattlesnake Ridge), Eleana Range (Pinyon Butte, Sugar Loaves); ~20 acres of habitat

Protection Status (NV): No federal or state protections. Listed on the Nevada Division of Natural Heritage At-Risk Plant and Animal Tracking List and the Nevada Native Plant Society Watch List (<https://heritage.nv.gov/documents/ndnh-current-tracking-list>)

Current Monitoring Goal: Monitor weed abatement activities along road cuts, drill pads, and sumps; survey subset of populations once every 5 years

Contact 702-295-0393 if your activity might potentially impact this sensitive species