

Ivesia arizonica var. *saxosa* – Rock purpusia

Family: Rosaceae (rose)

Bloom Period: May-August

Perennial: Hanging clumps, green

Leaves: Flat, sheathing bases generally hairless, 2-4 leaflets per side, round, evenly toothed or lobed

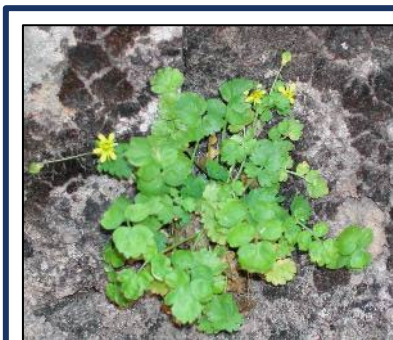
Flowers: Open, five separate white petals, generally less than ten flowers per plant

Fruit/seed: Ridged, pale

Uniqueness: Grows on rock faces

Location it was first identified (type locality): South Pahroc Range, Lincoln County, NV (C.A. Purpus 1898)

Associated Vegetation: Pinyon pine, juniper, sagebrush

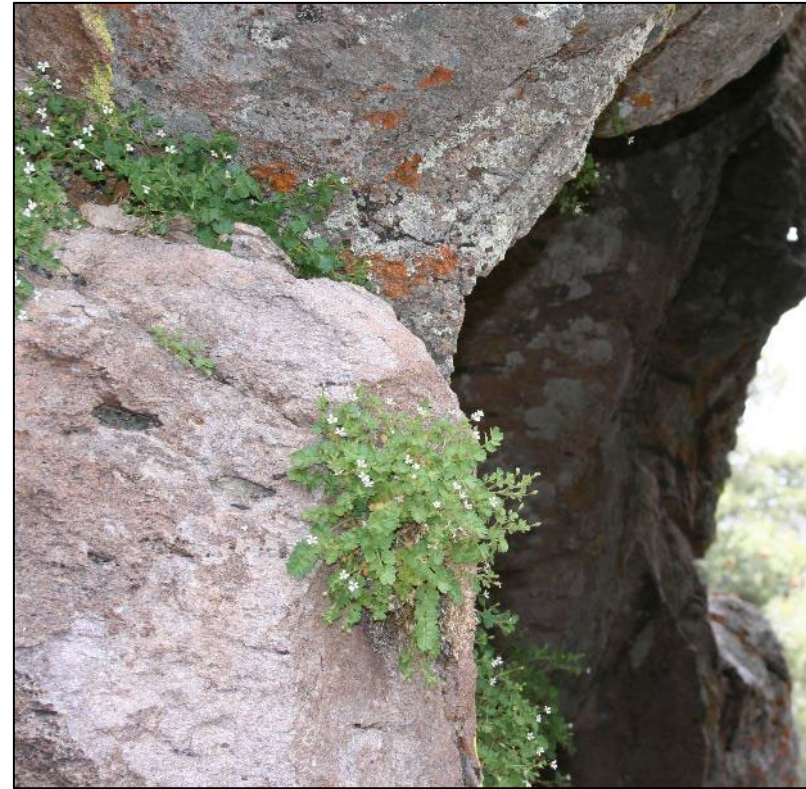


A similar plant with yellow flowers, *Ivesia arizonica* var. *arizonica*, is frequently found where *Ivesia arizonica* var. *saxosa* grows, but is not considered a sensitive or rare species.



Ivesia arizonica var. *saxosa* – Rock purpusia

Family: Rosaceae (rose)



Habitat: Crevices of cliffs and boulders on volcanic rocks

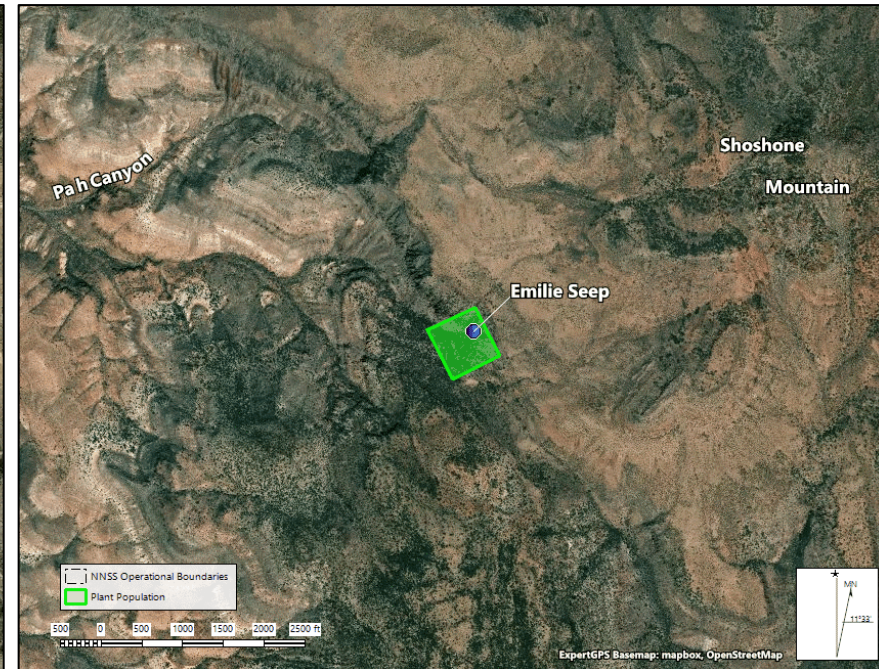
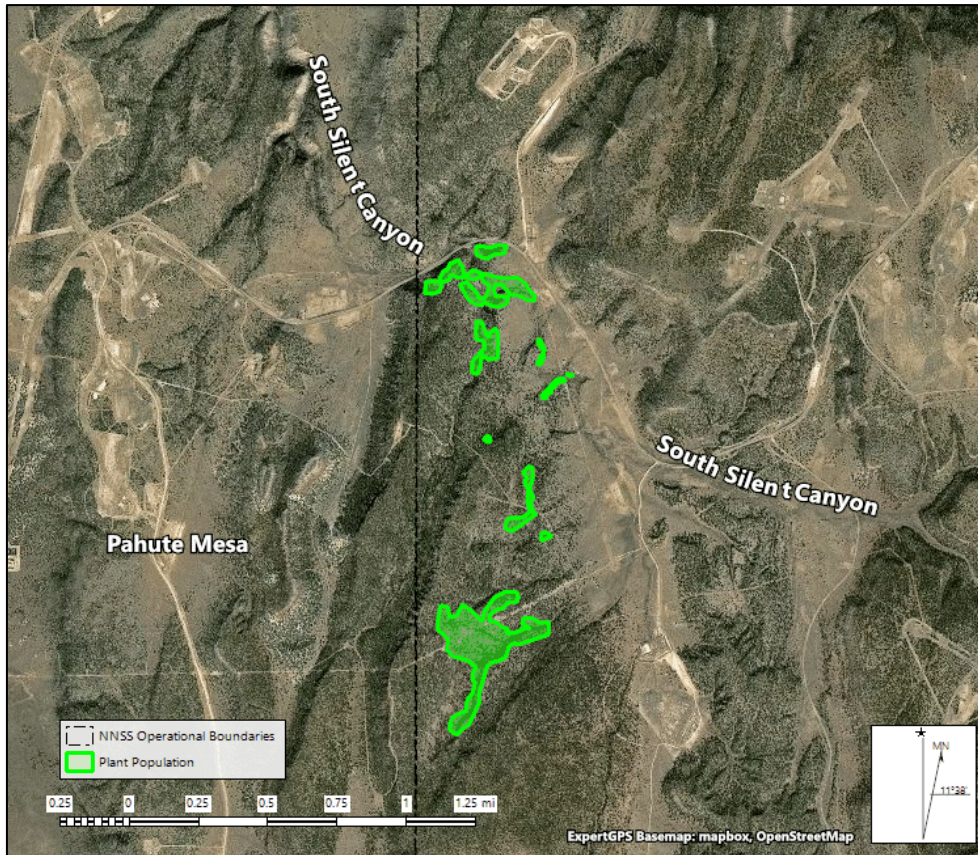
Distribution: NV (Lincoln and Nye Counties)

Elevation: 4,925-6,800 feet

Threats on the NNSS: Remote locations growing on rock faces, old access roads are now inaccessible; no known human threats

Ivesia arizonica var. *saxosa* – Rock purpusia

Family: Rosaceae (rose)



Contact 702-295-0393 if your activity might potentially impact this sensitive species

Distribution on the NNSS: Pahute Mesa (South Silent Canyon) and Southwest Shoshone Mountain; ~70 acres of habitat

Protection Status (NV): No federal or state protections. Listed on the Nevada Division of Natural Heritage At-Risk Plant and Animal Tracking List and the Nevada Native Plant Society Watch List (<https://heritage.nv.gov/documents/ndnh-current-tracking-list>)

Current Monitoring Goal: Focus on confirming the Shoshone Mountain population – plants with white flowers were collected from this location in 1997, the site was revisited in 2011 but plants were not flowering, and the site has not been revisited since; survey subset of populations once every 5 years