

Cymopterus ripleyi var. *saniculoides* – Sanicle biscuitroot

Family: Apiaceae (celery, carrot, or parsley)

Bloom Period: April-June

Perennial: Low growing from a single root

Leaves: Three sections, each section with three dentations, dark green, shiny

Flowers: Spherical head of many dark purple flowers

Fruit/seed: Fruit often asymmetrical, dwarfed or twisted due to congestion of the flowers, very small silky-layer of hairs on seed-bearing structures (mericarps); seed purplish body

Uniqueness: *Cymopterus ripleyi* var. *saniculoides* is distinguished from *Cymopterus ripleyi* var. *ripleyi* (a similar plant not considered rare/sensitive) based on flower color, geography, elevation, and habitat; the latter having white to cream flowers and occurring at higher elevations (3,150-6,720 feet) in sagebrush, Pinyon pine, and juniper habitat

Location it was first identified (type locality): Base of Spotted Range towards Frenchman Flat, south Nye County, NV, NTTR, along the eastern boundary of the NNSS (Ripley 1941)

Associated Vegetation: Saltbush, creosote, white bursage, wolfberry, blackbrush, burrobrush, spiny hopsage



Cymopterus ripleyi
 var. *saniculoides*
 purple flowers



Cymopterus ripleyi
 var. *ripleyi*
 cream flowers

***Cymopterus ripleyi* var. *saniculoides* – Sanicle biscuitroot**
Family: Apiaceae (celery, carrot, or parsley)



Habitat: Widely distributed in sandy soils

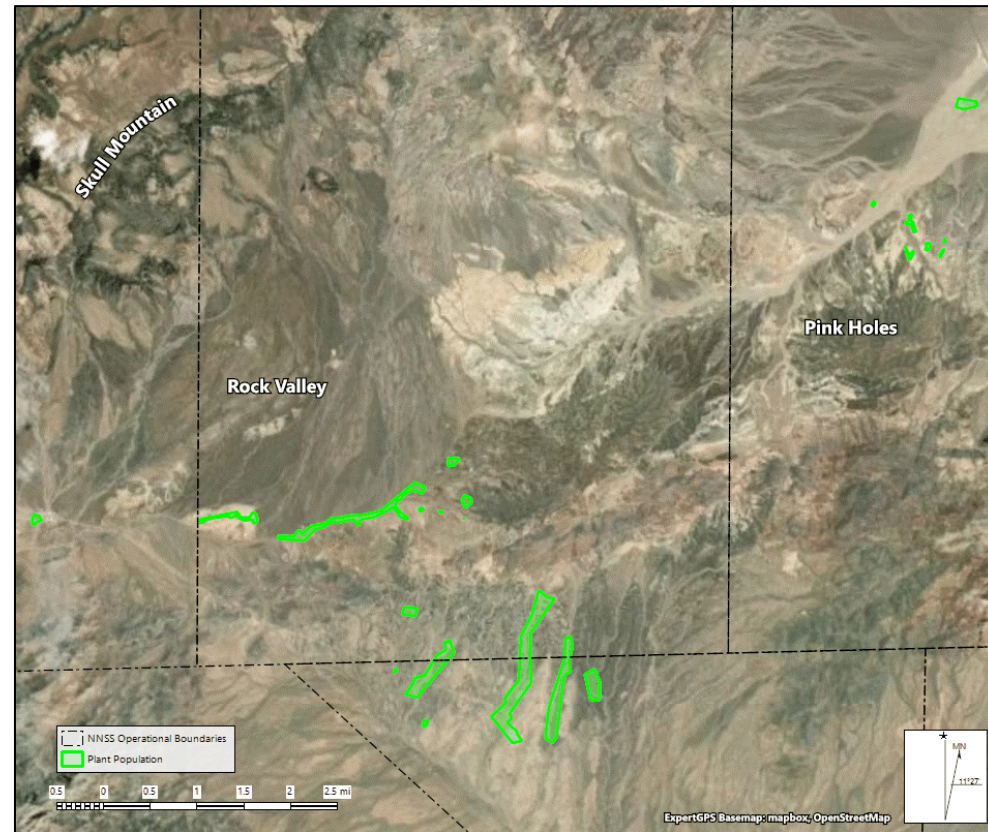
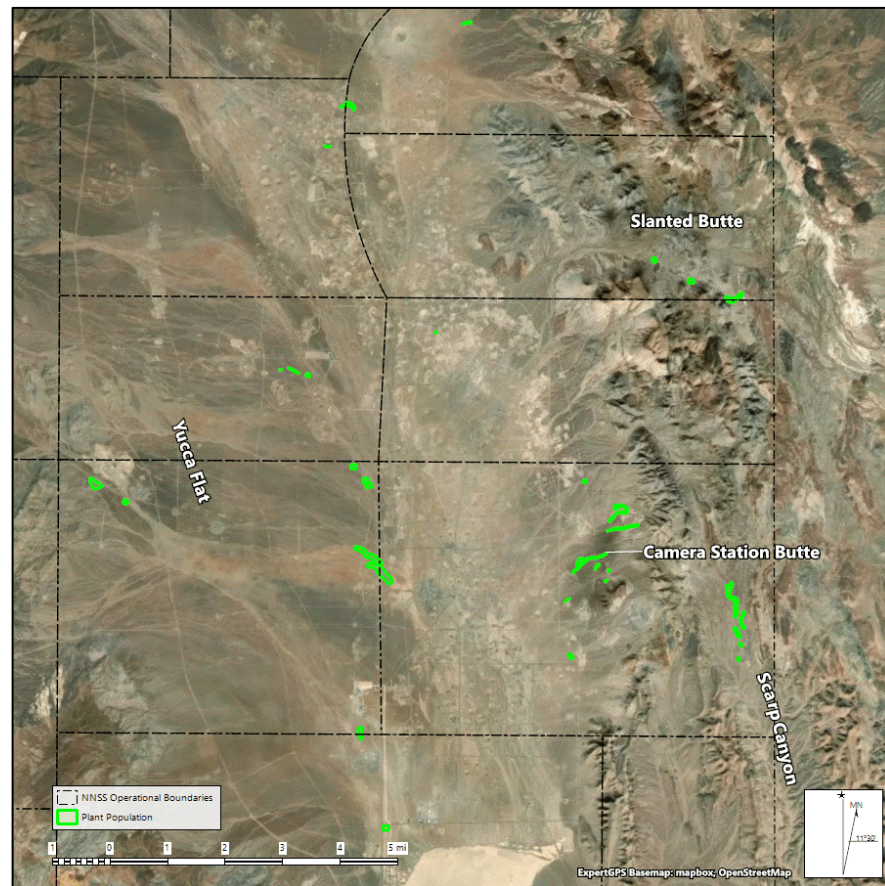
Distribution: NV (Nye and Lincoln Counties), possible in CA (Inyo County) although not recognized by The Jepson Herbarium

Elevation: 3,200-6,700 feet

Threats on the NNSS: The plant is widespread throughout the NNSS with new locations identified every year; low risk threats from infrastructure projects like new powerline construction

Cymopterus ripleyi var. *saniculoides* – Sanicle biscuitroot

Family: Apiaceae (celery, carrot, or parsley)



Distribution on the NNSS: Yucca Flat, Slanted Butte, Camera Station Butte, Scarp Canyon, Pink Holes Hill, Rock Valley; ~580 acres of habitat

Protection Status (NV): No federal or state protections. Listed on the Nevada Division of Natural Heritage At-Risk Plant and Animal Tracking List and the Nevada Native Plant Society Watch List (<https://heritage.nv.gov/documents/ndnh-current-tracking-list>)

Current Monitoring Goal: Plant is widespread and low priority for monitoring; survey subset of populations once every 5 years

Contact 702-295-0393 if your activity might potentially impact this sensitive species