

Phacelia mustelina – Weasel phacelia

Family: Boraginaceae (borage)

Bloom Period: June-September (depending on elevation)

Annual: Small, branching, some stems grow along the ground curving upward (decumbent), some stems grow upward in a curve from the base (ascending), plant is covered with hairs bearing glands upon their tips (glandular)

Leaves: leafstalks present that attach leaves to stems (petiolate), round, irregularly toothed

Flowers: Bell shaped, drop off at maturity (deciduous), petals and throat violet to purple, yellow center (flower tube)

Fruit/seed: Fruit is short and covered with hairs bearing glands upon their tips (glandular); seeds are pitted

Uniqueness: Strong, disagreeable odor

Location it was first identified (type locality): Head of Titus Canyon, Grapevine Mountains, Death Valley, Inyo County, CA (Gilman 1935)

Associated Vegetation: Blackbrush, sagebrush, Pinyon pine, juniper, uncommonly in creosote/saltbush



“Odor of an angry or scared weasel”
(Gilman 1935)

Many *Phacelia* species have a disagreeable odor that deters herbivory and attracts pollinators. Some species are described as having an onion-like odor or rotten-dead skunk odor, while other species have no smell or a pleasant, sweet smell.

Phacelia mustelina – Weasel phacelia

Family: Boraginaceae (borage)



Habitat: Volcanic (usually) or limestone substrates; grows in cliff crevices, rock ledges, or gravel talus

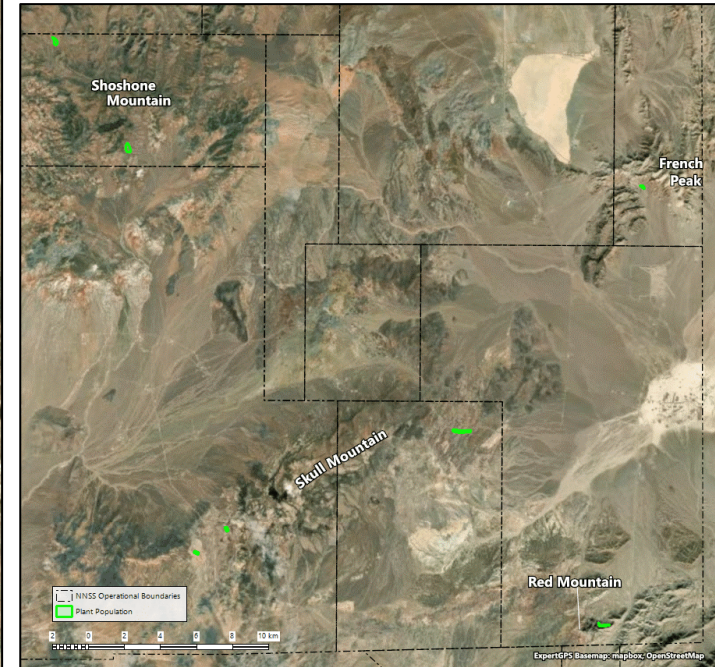
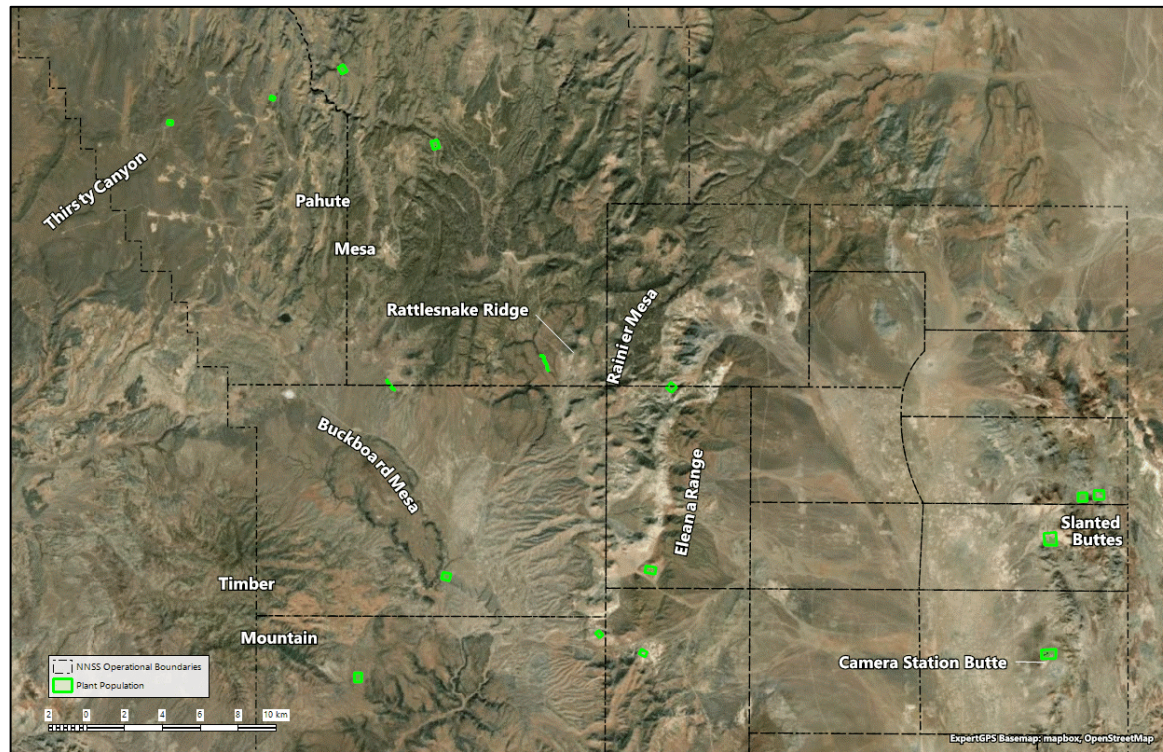
Distribution: NV (Nye County), CA (Inyo and San Bernardino Counties)

Elevation: 3,500-6,500 feet

Threats on the NNSS: Although in small numbers, the plant occurs throughout the NNSS in remote areas; no known human threats

Phacelia mustelina – Weasel phacelia

Family: Boraginaceae (borage)



Distribution on the NNSS: Red Mountain, Skull Mountain, Shoshone Mountain, Timber Mountain, French Peak, Camera Station Butte, Slanted Buttes, Eleana Range, Buckboard Mesa, Rattlesnake Ridge, Rainier Mesa, Pahute Mesa, Thirsty Canyon; ~105 acres of habitat

Protection Status (NV): No federal or state protections. Listed on the Nevada Division of Natural Heritage At-Risk Plant and Animal Tracking List and the Nevada Native Plant Society Watch List (<https://heritage.nv.gov/documents/ndnh-current-tracking-list>)

Current Monitoring Goal: A low-priority plant for monitoring due to it occurring over most of the NNSS, occurring at many locations offsite, and no known human threats; survey subset of populations once every 5 years

Contact 702-295-0393 if your activity might potentially impact this sensitive species