

Arctomecon merriamii – White bearpoppy

Family: Papaveraceae (poppy)

Bloom Period: April-May

Perennial: 7-12 inches tall

Leaves: Bluish-green; densely covered with long, silvery, pilose hairs; form a compact clustered mat; resemble a bear's paw

Flowers: White, large, showy, inclined to nod in bud, one flower per stem, on stems with no leaves

Fruit/seed: Fruit is a capsule 1-1.5 inches long containing many tiny seeds

Uniqueness: The bitter, milky, latex-like substance produced by this plant contains large quantities of alkaloids which are toxic to many animals, protecting it from herbivory

Pollinators: Attracts bees and butterflies; capable of self-pollination and outcrossing; possibly pollinated by the Mojave poppy bee, an imperiled species in Nevada

Location it was first identified (type locality): Las Vegas Valley, Clark County, NV (Merriam & Bailey 1891)

Associated Vegetation: Creosote, white bursage, shadscale saltbush, *Ephedra*, blackbrush



Arctomecon californica (yellow flowers, does not grow on the NNSS) is currently under review for protection under the Endangered Species Act

Arctomecon humilis (white flowers, only grows in Arizona) is currently protected under the Endangered Species Act

Arctomecon merriamii – White bearpoppy

Family: Papaveraceae (poppy)



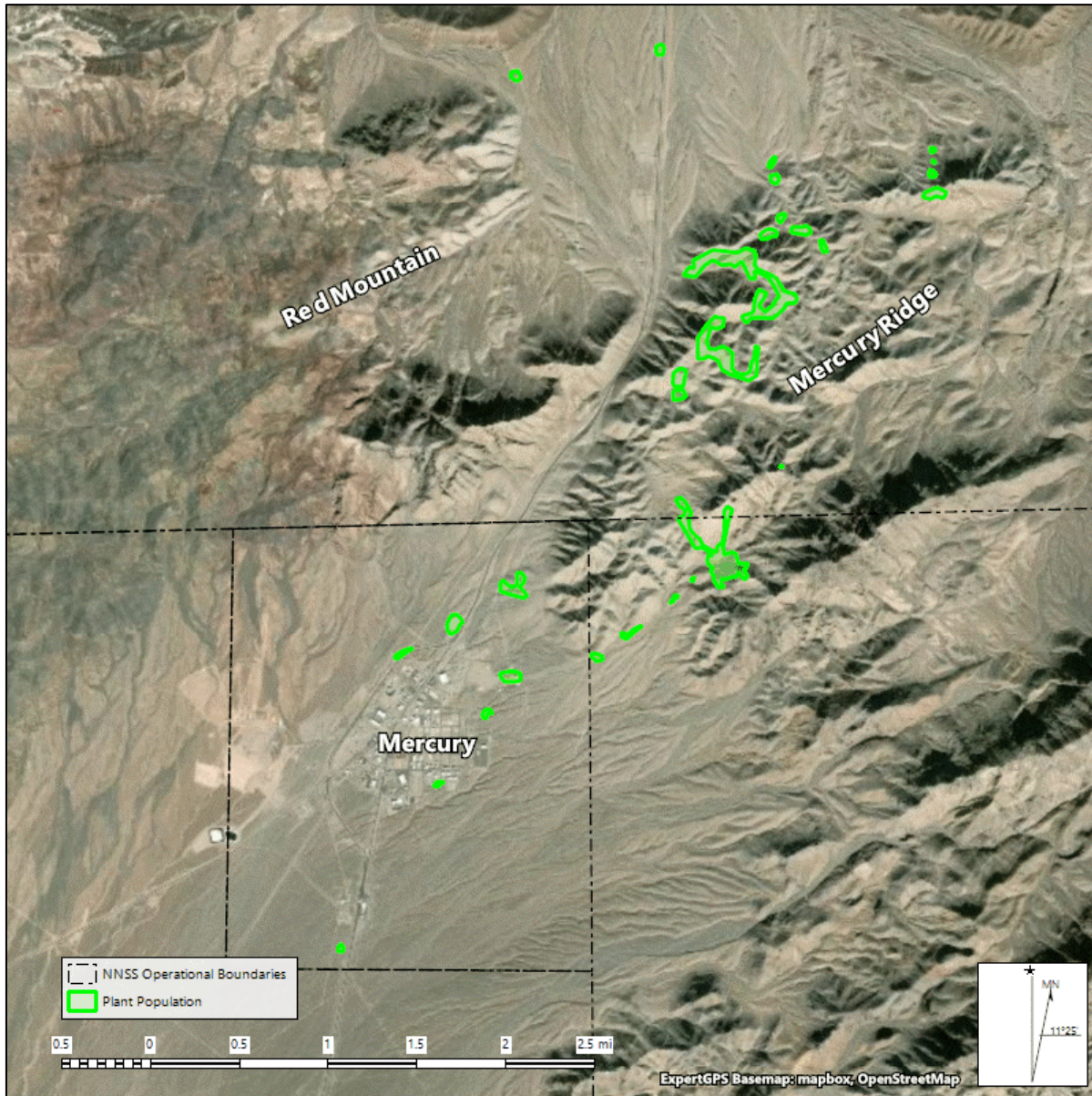
Habitat: Dolomitic limestone outcrops of steep, rough, mountain ranges to fairly level areas of gravelly soils among flat, dolomitic rock masses; also, in disturbed soils

Distribution: NV (Nye, Lincoln, and Clark Counties), CA (Inyo and San Bernardino Counties)

Elevation: 1,960-5,900 feet

Arctomecon merriamii – White bearpoppy

Family: Papaveraceae (poppy)



Distribution on the NNSS: Mercury, Mercury Ridge, Red Mountain; ~105 acres of habitat

Threats on the NNSS: Majority of populations are isolated, where no activities occur; construction and herbicide spraying remain a threat for the Mercury populations

Protection Status (NV): No federal or state protections. Listed on the Nevada Division of Natural Heritage At-Risk Plant and Animal Tracking List and the Nevada Native Plant Society Watch List (<https://heritage.nv.gov/documents/ndnh-current-tracking-list>)

Current Monitoring Goal: Monitor construction activities and minimize herbicide treatments in known populations in Mercury; survey subset of populations once every 5 years

Contact 702-295-0393 if your activity might potentially impact this sensitive species